

ABC Citrix Client Types - Remote Application Access

Resources can be delivered on the desktop, through a Web browser, or through the Citrix application.

(Used by all foreign office users of NVS, remote travel office users of NVS and remote sales consultants using NVS)



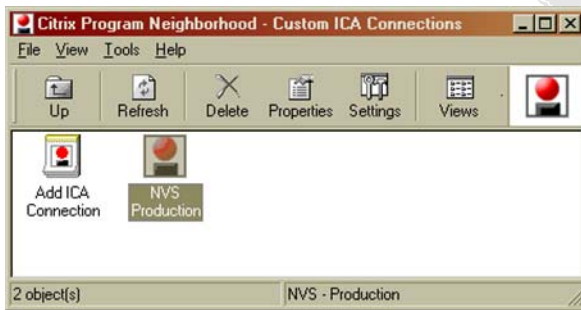
1. Citrix ICA MetaFrame Application

(Internet user - agents)

Client for 32-bit Windows - Version 8.x



Remote user
(Windows 2K/XP OS)



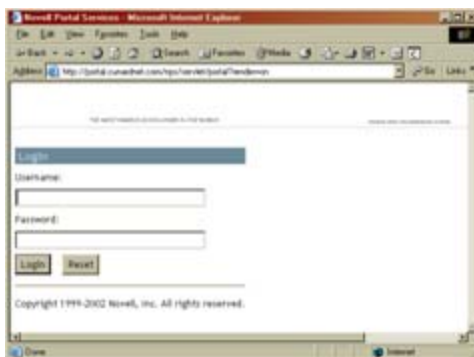
Application access via published resources.
Configure remote Citrix server with **public** IP addresses.



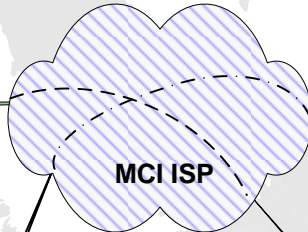
Remote user

2. Agent Access - via URL

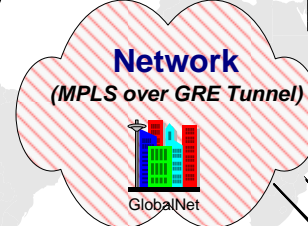
(Internet - <http://portal.abcnet.com>)



Public Internet



Private internal



Dual T1s - Frame-Relay
(ZTT managed)



Remote user
(Windows 2K/XP OS)

3. Citrix ICA MetaFrame Application

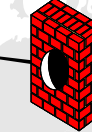
(WAN user - internal users)

Client for 32-bit Windows - Version 8.x



Application access via published resources.
Configure remote Citrix server with **private** IP addresses.

BorderManger Firewall



TCP/IP port 80 HTTP

BorderManger Firewall



TCP/IP port 80 HTTP (ICA Brower)
TCP/IP port 1494 ICA protocol

Novell

Novell® Portal Services (NPS)

ZIA-NPS1 172.15.3.9



<http://portal.abcnet.com>

192.27.190.8

172.15.1.1 (Default Gateway)

Cisco Catalyst
6513 switch

Citrix MetaFrame Server Farm

(Windows 2K servers)

ica.abcnet.com

ZIA-CTX1 172.15.3.30



logon requests
192.27.190.9

ZIA-CTX2 172.15.3.31



2Gb 1.2Ghz Pentium III Dual
192.27.190.10

ZIA-CTX3 172.15.3.32



2Gb 1.2Ghz Pentium III Dual
192.27.190.11

ZIA-CTX4 172.15.3.33



2Gb 2.4Ghz Xeon Quad
192.27.190.29

public IPs

Farm: ZIA-CTX-FARM1